

Published monthly since 1974

SOUTHEAST ASIA building

INCORPORATING ARCHITECTURE, INTERIOR DESIGN AND LANDSCAPING

OCTOBER 1997

MITA (P) No. P030/10/97 KDN No. 1560 (1270) - (6)

Cover Story:
**ARCHITECTURAL
APPLICATION OF
CONCRETE**



Buildable Designs

Paris-based architect Mr Manuel Nunez Yanowsky of SADE SARL is well-known for his ability to exploit concrete technology especially prefabrication, to create architecturally challenging and exciting buildings, as can be clearly seen from the projects described in the next few pages.

Mr Yanowsky has done projects in several countries all over the world, including Korea, in Asia. His presentation on 'The future of prefabrication in the hands of the conceptors' at a seminar organised in Singapore last year, by the Construction Industry Development Board (CIDB), was well received.



The Pablo Picasso Place in Noisy-le-Grand, near Paris, France – one of the first projects to be completely prefabricated architecturally.

Pablo Picasso Place

Pablo Picasso Place is located in Noisy-le-Grand, a new town 15 minutes away from Paris, if travelling by Motorway A4.

Being the centre of Le Pavé Neuf, a residential and commercial area, the place with an octagonal configuration, incorporates landscaping, sports grounds and a monumental sculpture by Mr Miguel Berrocal.

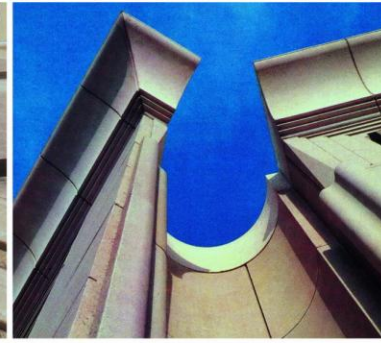
The construction programme sought to create 540 social housing units, shops and schools for children from this area. The housing units are standard and are based on the detailed technical specifications for such projects.

This project can be seen as an exploration of Parisian architecture that has resulted in the creation of various shapes such as an arched buttress 'delimiting' a promenade around the place, and windows with 'ogival' shapes, and dominated in the vertical plane by two giant 'suns', 50 m (17 floors) high.

The facades in this project were completely prefabricated from about 50 cast pieces and some variants. The Pablo Picasso Place is one of the first important projects to be completely prefabricated architectonically. The realisation of this project proves that it is possible to precast concrete into complicated geometrical shapes, and construct buildings of high quality.

The full body, coloured concrete, gives it the typical Ile de France appearance of the broad stone used for residential buildings in Paris. Moreover, the sandblasted pieces provide a rough aspect which attracts light in halftones.

Below: This project proves that it is possible to precast concrete into complicated geometrical shapes.



Above and below: The Pablo Picasso Place with an octagonal configuration, incorporates landscaping, sports grounds and a monumental sculpture by Mr Miguel Berrocal.

